

**B - S C A N**  
**A B S C A N**



**Advance Ophthalmic Ultrasound System**

- Compact and portable
- High resolution
- Advance image processing software
- Advanced case report
- A-Auto and Manual modes

**Description:** Optitech's **OPTIBSCAN** is the most advanced ophthalmic ultrasound system available today. This instrument offers excellent resolution and full functionality in a compact design. The entire system is designed and manufactured by OPITECH to provide unrivalled after sales service and support.

## B Scan

- Sealed, frequency-adjustable, magnetic driven noiseless B scan probe
- Super gain of 100dB, with vitreous body intensify function
- Save 8000 frames of images for 9 minutes of scanning before freezing. Loop one by one continuously
- Cine loop images are saved as thumb images right below scan for instant review
- Runs on Windows 10 platform – upgradable Windows 11
- Touch enabled 13.3" LCD back light screen
- Scanning Angle : 53°
- Frequency : 10 MHz, Magnetic driven noiseless
- Scanning mode : Sector scanning
- Magnify : Continuous real time magnification and panning in live and frozen modes
- Resolution : Lateral <0.3mm ; Vertical <0.2mm
- Depth : 60mm
- Gray scale : 256
- Gamma and DR : 5 steps Gamma and Dynamic range correction for optimal image presentation
- Measure mode : Distance, angles, ellipse
- Movies : Can record scan for 60 minutes in MP4 format and can be played in any smart phone or PC

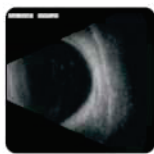
## A Scan

- Bio-measurement technique, sensitive data acquisition, 10 scanning results for each eye
- Three lens for each eye for selection: folding lens, anterior-chamber lens, posterior-chamber lens. You can select the suitable lens material and degree A scan
- Eye mode: Normal, Dense, Aphakic, Pseudo/PMMA, Pseudo/Acrylic, Pseudo/Silicone, Silicone Oil filled
- Frequency : 10MHz, with LED
- Depth : 15-40mm
- Precision : +/- 0.05mm
- Measurement : AL, ACD, L, V and the average
- IOL Formula : SRK-II, SRK-T, HOFFER-Q, HOLLADAY, BINKHORST-II, HAIGIS
- Stat. Calculation : Average and standard deviation
- Store : 10 scanning results for each eye

### Others

- Display mode : B, B+B, B+A, A
- Case report : PDF format case report archiving
- Case search : Multi-keywords

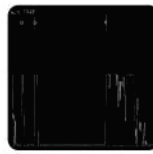
### \*A-Scan Optional



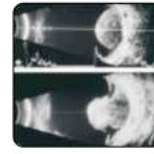
10MHz Bscan Image



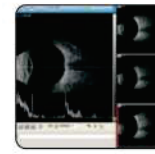
B scan image



A scan image



Bscan Image



B scan examination interface

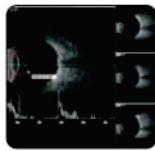
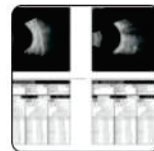


Image dispose interface



A scan examination interface



Report generated interface



Inquiry medical case interface



## TARUN ENTERPRISES

**H.O.:** 8/8, Strachy Road, Prayagraj (Allahabad) – 211001, U.P., INDIA  
Phone: +91 - 8176080204, Email: info@optitecheyecare.com

**B.O.:** A96/1, Second Floor, Phase II, Mayapuri Industrial Area, New Delhi – 110064  
Phone: 011-47070362, Email: delhi@optitecheyecare.com



www.optitecheyecare.com



+91 - 9335154556



OptitechOfficial

Your nearest dealer